



STEP 1: Click on the FILE menu.



▶ Favorites

- ▶ -KO -LD
- ▶ **Inbox** 3
- Outbox
- Search Folders

▶ LD -LD

- ▶ [blurred]
- ▶ [blurred]
- ▶ [blurred]
- ▶ [blurred]

Search All Mail Items All Mailboxes

All Unread By Date

▶ Tuesday

[blurred]
Tue 6:31 PM

▶ Last Month

[blurred]
2019-04-01

▶ Older

[blurred] 201:





STEP 2: Click on Account Settings.

Account Information

  IMAP/SMTP


 Add Account


Account Settings

Account Settings

Change settings for this account or set up more connections.

- [Get the Outlook app for iPhone, iPad, Android, or Windows 10 Mobile.](#)


Tools

Mailbox Settings

Manage the size of your mailbox by emptying Deleted Items and archiving.


Manage Rules & Alerts

Rules and Alerts

Use Rules and Alerts to help organize your incoming email messages, and receive updates when items are added, changed, or removed.


Manage COM Add-ins

Slow and Disabled COM Add-ins

Manage COM add-ins that are affecting your Outlook experience.



Info

Open & Export

Save As

Save as Adobe PDF

Save Attachments

Print

Office Account

Feedback

Options

Exit



STEP 3: Click on the Account Settings... option.

Info

Open & Export

Save As

Save as Adobe PDF

Save Attachments

Print

Office Account

Feedback

Options

Exit

Account Information

IMAP/SMTP






+ Add Account



Account Settings

Change settings for this account or set up more connections.

- [Get the Outlook app for iPhone, iPad, Android, or Windows 10 Mobile.](#)

-  **Account Settings...**
Add and remove accounts or change existing connection settings.
-  **Account Name and Sync Settings**
Update basic account settings such as account name and folder sync settings.
-  **Server Settings**
Update logon information, such as server name, port, and authentication settings.
-  **Change Profile**
Restart Microsoft Outlook and choose a different profile.
-  **Manage Profiles**
Add and remove profiles or change existing profile settings.

by emptying Deleted Items and archiving.

nize your incoming email messages, and receive changed, or removed.

DM Add-ins

fecting your Outlook experience



Account Settings

STEP 4: First, click on the account you wish to edit, THEN click on Repair.

You can add or remove a [account] settings.

Email | Data Files | RSS Feeds | SharePoint Lists | Internet Calendars | Published Calendars | Address Books

New... Repair... Change... Set as Default Remove

Name	Type
-KO -LD	IMAP/SMTP (send from this account by default)
[blurred]	IMAP/SMTP
[blurred]	IMAP/SMTP
[blurred]	IMAP/SMTP
[blurred]	IMAP/SMTP
[blurred]	IMAP/SMTP
[blurred]	IMAP/SMTP
[blurred]	IMAP/SMTP
[blurred]	IMAP/SMTP
[blurred]	IMAP/SMTP

Selected account delivers new messages to the following location:

-KO [blurred]
in data file C:\Users\[blurred]\AppData\Local\Microsoft\Outlook\



STEP 5: Click on "Advanced Options"

Then check "Let me repair my account manually"

Then click Repair.



lance@knightandowl.com

1

Advanced options ^

Let me repair my account manually

2

Repair

3



STEP 6: Click on INGOING MAIL to edit your INcoming server settings::

(use your own name, email address, and password)

lance@knightandowl.com

Incoming mail ^

User name

Password

Remember password

Server Port

Encryption method

Require logon using Secure Password Authentication (SPA)

Outgoing mail v

[Go back](#)

[Next](#)



STEP 7: Click on OUTGOING MAIL to edit your OUTgoing server settings:

- New Email
- New
- Favorites
- Inbox
- Inbox
- Inbox
- Inbox
- Inbox
- Sent
- Sent
- spam
- spam
- Outbox
- Trash
- Trash - --KO -LD
- Trash - 3rd -3

IMAP Account Settings

lance@knightandowl.com

Incoming mail ▾

Outgoing mail ▲

Server Port

Encryption method

Server timeouts 1 minute

Require logon using Secure Password Authentication (SPA)

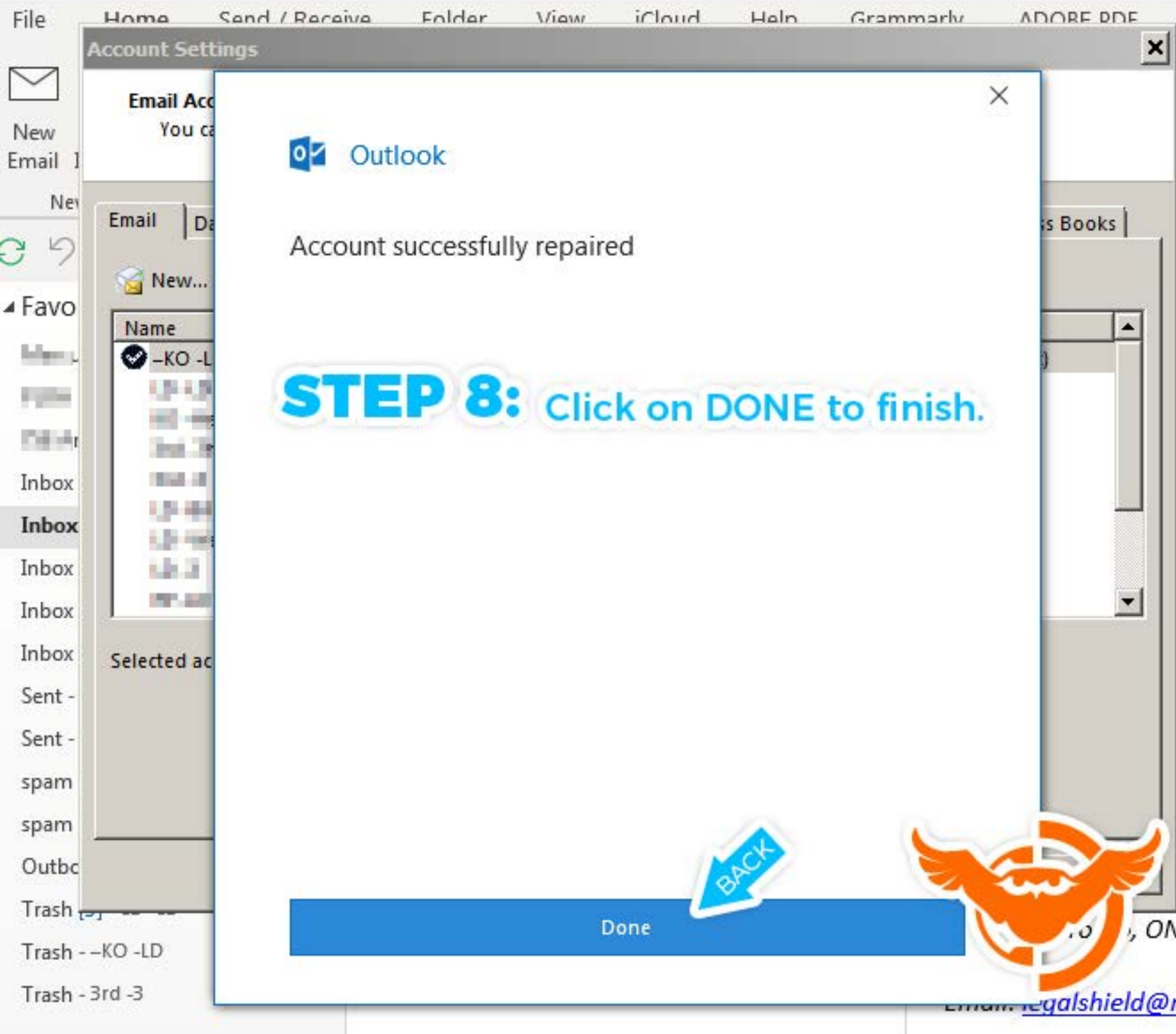
My outgoing (SMTP) server requires authentication

- Use same settings as my incoming mail server
- Log on using user name and password

Go back

STEP 8: Click on NEXT to test the settings and finish.





STEP 8: Click on **DONE** to finish.



Done

